

**RESOLUTION 22-24
OF THE HELIX WATER DISTRICT BOARD OF DIRECTORS
ADJUSTING BOUNDARIES OF DIRECTOR ELECTORAL DIVISIONS**

BE IT RESOLVED by the Helix Water District Board of Directors:

SECTION 1: The Board of Directors finds and determines:

- a. The U.S. Census Bureau is required by Article I, Section 2, of the U.S. Constitution to conduct an accurate count of the population every ten years;
- b. California Elections Code Section 22000 et seq. requires that “after each federal decennial census, and using that census as a basis, adjust the boundaries of any divisions so that the divisions are, as far as practicable, equal in population and in compliance with Section 10301 of Title 52 of the United States Code, as amended, to the extent those provisions apply;”
- c. The Elections Code requires that the Helix Water District Board of Directors adopt a resolution amending director divisions no later than April 17, 2022;
- d. The board held public hearings on January 19, 2022, and April 6, 2022, to receive public testimony relating to redistricting criteria and communities of interest, and directed staff and the district’s demographic consultant to prepare draft division plans for consideration. At the hearing on April 6, 2022, the board selected Map Option 3 (now “the Preferred Map”), for adoption;
- e. At each of the public hearings on redistricting, the board heard staff’s presentation relating to “communities of interest,” which led the board to reach the following determinations about communities of interest on the Preferred Map relevant to Helix Water District voting divisions as required under federal and state law:
 - (1) *The divisions are geographically contiguous.* The divisions are arrayed in a simple and logical form without any islands and minimal intrusions from the area of one division into another;
 - (2) *To the extent practicable, the Preferred Map respects the geographic integrity of local neighborhoods and local communities of interest.* The map redraws division lines to better align with communities of interest and most other county municipalities.
 - (3) *The Preferred Map respects the geographic integrity of cities and census designated places, with divisions in those cities and places minimized.*

The Preferred Map also respects in large part the jurisdictional boundaries of the county's other cities and special districts.

- (4) *The divisions are easily identifiable and understandable by residents.* The divisions in the Preferred Map form a relatively simple pattern.
- (5) *To the extent practicable, the divisions are geographically compact.* Their configurations for the most part are compact, simple shapes, with nearby populations included in the same divisions.
- (6) *The divisions are balanced in terms of total population and voting age population.* The divisions are well within the one-person/one-vote deviations permitted under federal and state voting rights laws.
- (7) *The divisions reviewed and considered concentrations of minority voters.* Although the above criteria could not be met within any election district with a minority-majority district (i.e., a voting district where one distinct minority population is the majority population), the election districts do represent where possible an aggregation in single districts of substantial minority population blocs to enhance the potency of that minority voting voice.

- f. All information in the staff reports, maps, presentations, board debate and public testimony referenced above is hereby incorporated into this decision and serves as evidentiary basis for these findings and legislative decision.

SECTION 2: Pursuant to the provisions of the Fair Maps Act of 2019 as amended in 2020, codified in California Elections Code Section 21500 to 21509, after giving consideration to those provisions and applicable decisions of the courts, the board hereby adjusts, changes, and establishes the boundaries of the director divisions as set forth on the Preferred Map considered by the board at its public hearing on April 6, 2022, and reflected in Exhibit A, and they shall constitute and are hereby established as the boundaries of the director divisions of the Helix Water District for subsequent elections until further readjustment is required by law.

SECTION 3: Notwithstanding any other provision of this chapter, and pursuant to California Elections Code Section 22000, subdivision (e) (1) and (2), each of the directors in office at the time Resolution 22-24 takes effect shall continue in office until the expiration of the full term to which he or she was elected and until his or her successor is qualified, and any vacancy in a term currently underway shall be filled based on the divisions in effect at the time the current directors were elected.

SECTION 4: All resolutions or parts thereof in conflict with this resolution are hereby repealed.

SECTION 5: The general manager is directed to take all necessary steps to give effect to this resolution. If necessary to facilitate the implementation of this resolution, the general manager or his or her designee is authorized to make technical adjustments to the division boundaries that do not substantively affect the populations in the divisions, the eligibility of candidates, or the residence of elected officials within any division. The general manager shall consult with district general counsel concerning any technical adjustments deemed necessary and shall advise the board of any such adjustments required in the implementation of the divisions.

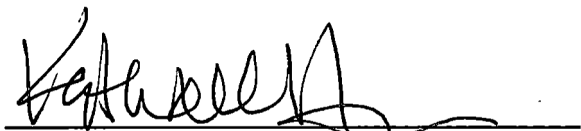
SECTION 6: This resolution is adopted following two noticed public hearings as required by Elections Code Section 22001 and shall take effect and be in full force immediately upon adoption.

PASSED, ADOPTED AND APPROVED this 6th day of April 2022, by the following vote:

AYES: Hedberg, McMillan, Gracyk, Scalzitti

NOES: None

ABSENT: Verbeke

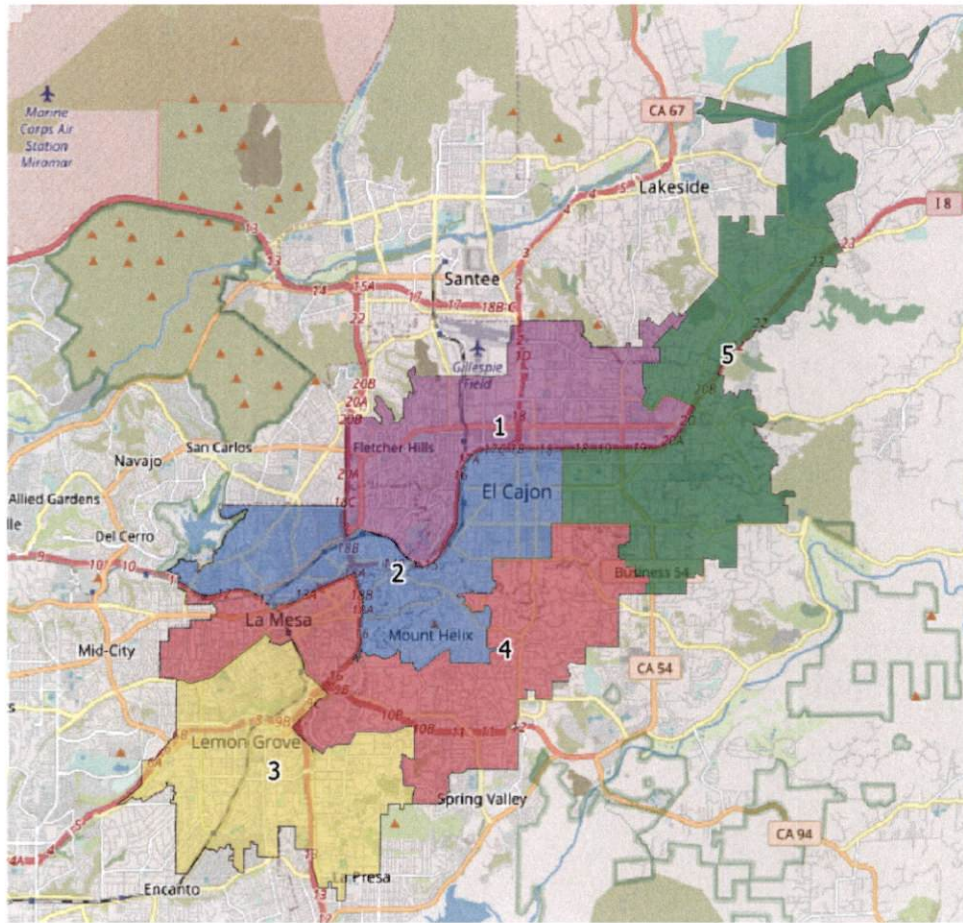

Kathleen Coates Hedberg, President

ATTEST:


Sandra L. Janzen, Secretary of the Board



Map Option 3



2020 Census Demographics

Division	Total Population	Raw Population	% Population	Latino	CVAP19 Total	CVAP19 NL White	CVAP19 NL Black	CVAP19 Hispanic	CVAP19 Not Hispanic	CVAP19 NL AIAN	CVAP19 NL ASIAN	CVAP19 NL Hawaiian	CVAP19 NL Other
1	57,451	216	0.38%	16,590	39,731	26,867	2,097	7,393	32,345	121	1,770	378	317
2	59,520	2,285	3.99%	17,168	38,129	24,113	2,989	8,139	30,010	45	1,578	137	191
3	59,349	2,114	3.69%	26,878	39,749	15,028	5,705	14,006	25,792	85	3,553	252	296
4	54,882	-2,353	-4.11%	14,674	39,826	25,458	2,786	8,289	31,521	128	1,564	188	277
5	54,972	-2,263	-3.95%	15,057	35,248	24,479	1,254	7,275	27,959	66	833	159	176
Total	286,174												
Ideal	57,235	Deviation	8.10%										

* CVAP= Citizens of Voting Age Population

** NL = Non-Latino

*** AIAN = American Indian/Alaskan Native